



Newsletter

October 2024

We held our annual general meeting this month and had a chance to reflect on some of our achievements. We were proud to report on our delivery of 27 regular programs that were attended by more than 70 participants over the year. Recent program evaluations provided great feedback. Helping us understand community needs and guide our future offerings. Popular events like dinners, workshops, excursions, and cultural celebrations highlighted the Wavlink calendar. Thanks to the State Government and City of Monash who provided grant funding that made many of these events possible. Our fundraising team the 'Friends of Wavlink' have also been busy and recently held a stall at the Caribbean Craft market, raising over \$500. We will be running several other fundraisers in the coming months including movie tickets, seed gifts raffles and special events. These are a great way for community members to contribute and support the wonderful work we do. Thank you to our staff and volunteers who's commitment and creativity make Wavlink everyone's happy place!



Wavlink is built on the lands of the Wurundjeri and Bunurong People. We pay our respects to their Elders, past, present and emerging.

Recent Highlights

Olympic Gold!



Trevor and Clinton recently represented Australia in the Special Olympics, with both picking up gold medals in the Bowling! They also competed in state competitions in the lead up to the Games. Congratulations, Clinton and Trevor!



Out and About



Pretty in pink at Feekah in Hawthorn.



Out and About at Federation Square in Melbourne.



Holiday Program

Wavlink held a full week of holiday programs this September, with outings to the Tesselaar Tulip Festival in Silvan, a cruise along the Yarra River, cooking and craft sessions, a BBQ lunch and karaoke, and biliards and bowling at Strike. We were fortunate to have glorious weather and great company.





Mosaics

The Mosaics class has grown this term, with it being a very popular class. Check out some of the designs participants have made this term below.



Karen with portrait of dogs Meg and Brandy.



Mel's Muppet mosaic.



Paul's new work in progress



Natalie with her mosaic creation.



Handmade at Wavlink

The participants and volunteers at Wavlink have had a busy term creating an array of artwork, jewellery, ceramics and more, which is now for sale through Wavlink. Get a head start on your end of year shopping or find a one of a kind gift.



Art

We explore different artists and styles and practice a variety of techniques in Art on Thursdays.

Half and Half Portraits and Watercolour Circles



Independent Living Skills



The ILS class took part in two sessions of Rail Safety & Awareness skills training with Metro Community Education Officers this term.

<- Here Daley and Philip undertake the second session at Glen Waverley Station.

Diary Dates

- **Tuesday 5 November** – Cup Day (Public Holiday)
Wavlink Closed- please remember to cancel Taxi's
- **Saturday 14 December** – Last day Term 4
- **Sunday 15 December** – End of year Festive Lunch
12.00pm – 3.00pm Oakleigh Hall, 142 Drummond St (further details soon)
- **Monday 16 Decemeber – Friday 19 December** Holiday Program
See December Holiday Program schedule below

2025 Term Dates

Holiday Program	13 January - 18 January	
Term 1	20 January - 12 April	12 wks
Public Holidays	*27 January - Australia Day *10 March - Labour Day *18 April - 21 April - Easter	
Holiday Program	14 April - 17 April	
Term 2	22 April - 5 July	11 wks
Public Holidays	*25 April - Anzac day *9 June - Kings Birthday	
Holiday Program	14 July - 19 July	
Term 3	21 July - 25 September	10 wks
Public Holidays	*26 September - Grand Final Eve (TBC)	
Holiday Program	29 September - 4 October	
Term 4	6 October - 19 December	11wks
Public Holidays	*4 November - Melbourne Cup *25 December - Christmas Day	



HOLIDAY PROGRAM

December 2024

- 16 Monday – Morning Excursion and Afternoon Xmas Craft Class
- 17 Tuesday – Morning Ceramic Tile Painting – Group Art Project. Lunch and Afternoon Karaoke
- 18 Wednesday – Lunch and a Movie – TBC
- 19 Thursday – Excursion BBQ Lunch at beach – Location TBC
- 20 Friday – City Excursion, Lunch and Gallery

Holiday Program 2025



Due to popular demand, in 2025 Wavlink will be delivering more holiday program activities. Sessions will be offered Monday – Saturday 9.30am – 3.30pm (excluding public holidays).

Planned group activities will include a mix of work shops, excursions and social events.

Scheduled dates are included in our Term calendar and detailed plans will be circulated quarterly.

**For further details or to register your interest, please contact us.
03 9561 7104 or info@wavlink.org.au**



ndis
REGISTERED
PROVIDER

CONTACT US

03 9561 7104

info@wavlink.org.au

36 Myrtle St, Glen Waverley 3150

www.wavlink.org.au



Friends of Wavlink



Our 'Friends of Wavlink' enjoy creating hand made crafts to sell at our market stall. Raising funds to help us purchase new equipment, make upgrades to our program facilities and provide community supports. Let us know if you would like to become a Friend of Wavlink.

Volunteer Opportunities

We welcome volunteers to support our community activities in various roles including:

- Fundraising
- Tutor support,
- Basic Administration
- Governance – Volunteer Board Directors

If you have experience in any of these areas or a desire to learn and contribute, contact us to register your interest and find out more about how you can get involved.

Contact us

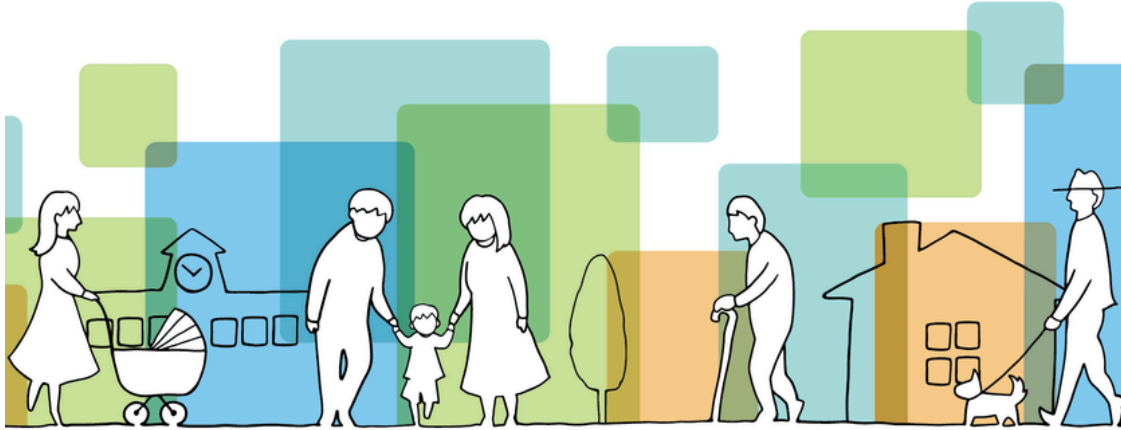
36 Myrtle Street, Glen Waverley
info@wavlink.org.au
 9561 7104



Connecting Carers in their Community

Grant Program 2024

WE'VE BEEN AWARDED A GRANT!



The 'Connecting Carers in their Community' grants program is supported by the Victorian Government

We are excited to announce that we have been awarded a grant from Carers Victoria, funded by the Victorian Government, under the Connecting Carers in their Community Small Grant Program.

This grant will enable us to enhance the support and resources we provide to carers in our community. We are grateful for this opportunity and are proud to have been selected.

This funding will allow us to better support our carers by bringing them together to reduce social isolation and improve connection with local support services.

We plan to use this funding to run a series of workshops and social events in partnership with local service providers.

Stay tuned for further updates on the exciting initiatives that will be made possible through this grant opportunity. We look forward to working with you all to create a supportive, connected and empowered community of carers.

If you would like to receive direct updates related to upcoming events please let us know and we will add you to our carers mailing list .



Contact us

36 Myrtle Street, Glen Waverley
info@wavlink.org.au
 9561 7104

Fundraising

To support our fundraising efforts purchase a gift or make a donation

HELP US GROW!



Look out for seed gift order forms at our reception area or contact us to receive directly. Order a gift of seeds for \$10 each and help Wavlink raise funds. \$5 from every purchase will go towards new equipment for our classes and community activities.



SUPPORT WAVLINK
DONATE NOW



All donations over \$2 are tax deductible

Contribute and help create opportunities for people with a disability to build skills, independence and community connections



Community Survey


In Term 4 Wavlink will survey community members to help us better meet your needs and improve our services.

Please contribute to this process by offering your feedback and suggestions. Surveys will be conducted using various methods including paper forms, online platforms and group discussions.

If you wish to participate and have a preferred method of communication (translated, easy read, sms, individual discussion) please let us know.

You are also welcome to share feedback or suggestions at any time by contacting us in person, over the phone or via email/ website.



 **03) 9561 7104**
 **info@wavlink.org.au**
 **www.wavlink.org.au**
 **36 Myrtle St, Glen Waverley, 3150**



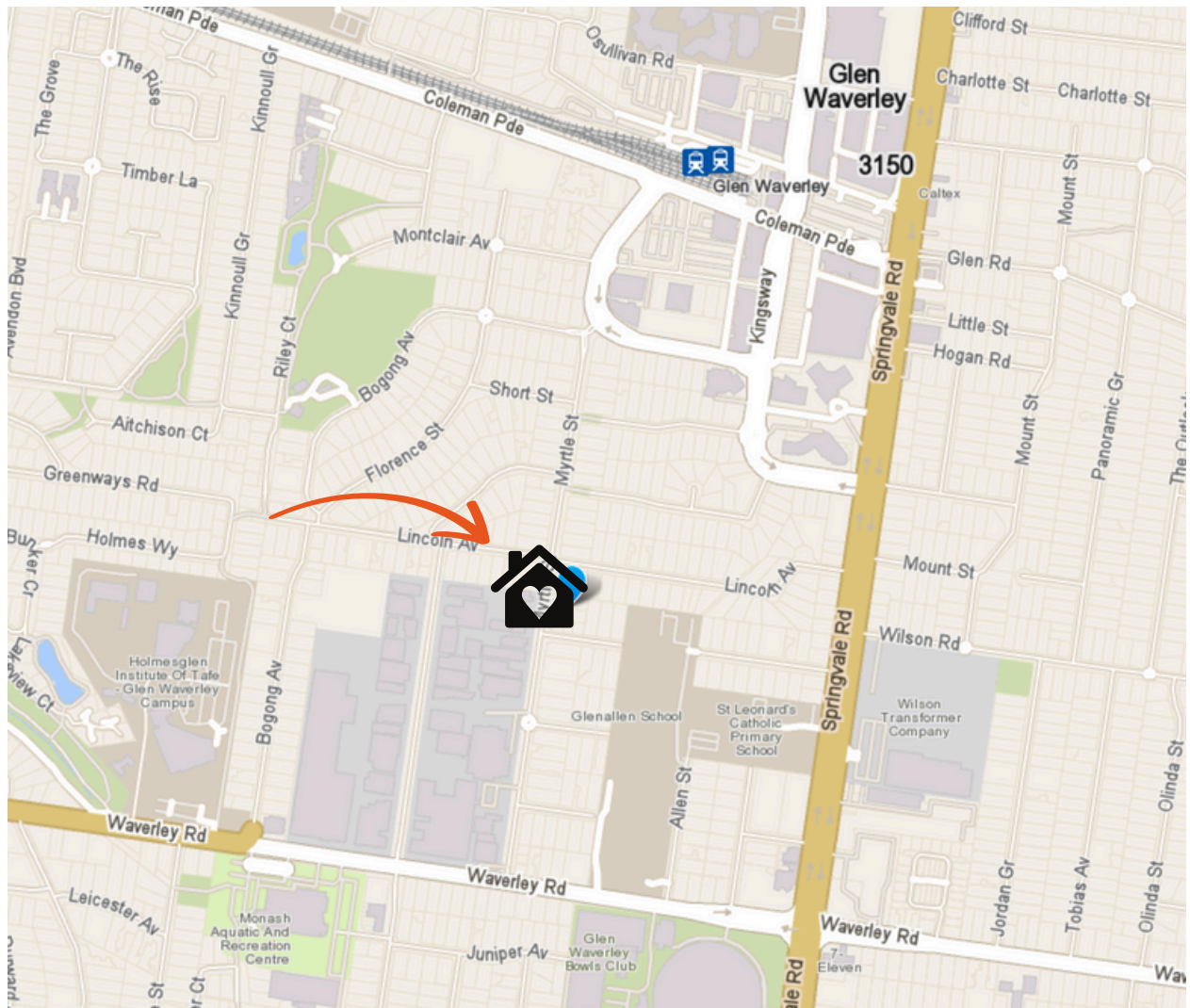
**Tell us about your
Neighbourhood House
experience!**

November 11 – 16



Neighbourhood Houses
The Heart of Our Community

Find us



Get Involved

To learn more about Wavlink, view our activity guide and get involved in our community, check out our website.

You can also visit us in person, call us or email.



03) 9561 7104



info@wavlink.org.au



www.wavlink.org.au



36 Myrtle St, Glen Waverley, 3150

