

WAVLINK NEWS

June 2021 Newsletter



START STOP START AGAIN

Hi everyone,

Welcome to our Term 2 newsletter,

Well what a term it's been since our last newsletter. We were almost back to some sort of normal at Wavlink and then the rug got pulled from under us again and we were faced with another two-week lockdown and classes via Zoom.

We have tried to keep our Wavlink Community as informed as possible as things change regarding COVID-19 restrictions and our services. We are slowly bringing in more small group programs with the hope that these will gradually increase as more restrictions are lifted.

This Term has also seen some staff changes as we, unfortunately, say goodbye to our talented Tech guru Angela, our guitar playing Shed/Art tutor Glenn and our bubbly tutor Rosa. We are sad to see them go but wish them all the very best in their next chapters.

As the financial year draws to a close, now is the best time to make a tax-deductible donation and support. Any contribution is greatly appreciated and helps us fund our wonderful programs. Call the office and speak to Isabel, Max or myself to donate today. Thank you!

Wishing everyone a safe and happy holiday.

Amber Fleming

DIARY DATES

DATES TO REMEMBER

- Term 2 2021 Finishes - Jun 26th
- Term 3 2021 Starts - Jul 12th
- NAIDOC Week - Jul 4th - 11th
- Term 3 2021 Finishes - Sept 18th
- Term 4 2021 Begins - Oct 4th



Students practicing their literacy & numeracy skills

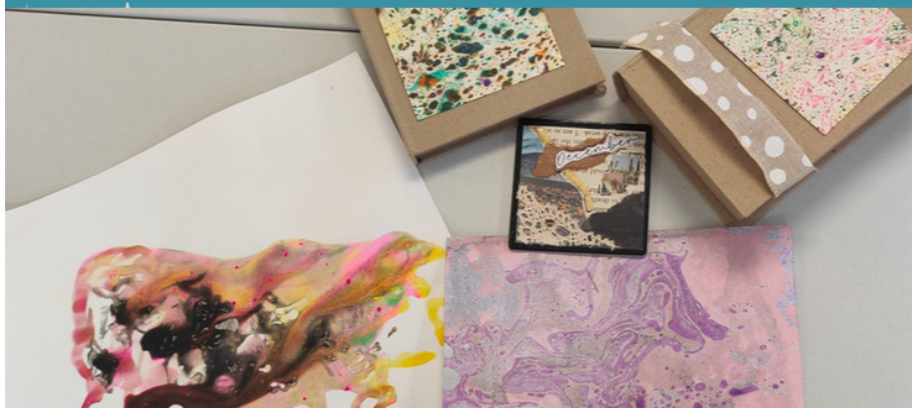
Term 2 Holiday Program at Wavlink



REGISTER NOW BY CALLING
9561 7104 OR EMAIL INFO@WAVLINK.ORG.AU
AT 36 MYRTLE ST, GLEN WAVERLEY

THURSDAY 1 JULY
WEDNESDAY 7 JULY
9.30AM-3.30PM

**PAPER CRAFT, GAMES, MUSIC,
BINGO, DANCING AND GREAT ACTIVITIES**



WHAT WE'VE BEEN UP TO



Our Air-clay class has been loving the use of the space at Brandon Park Community Centre for their creative pursuits.



Old-school Social Group enjoying a socially distanced music circle.



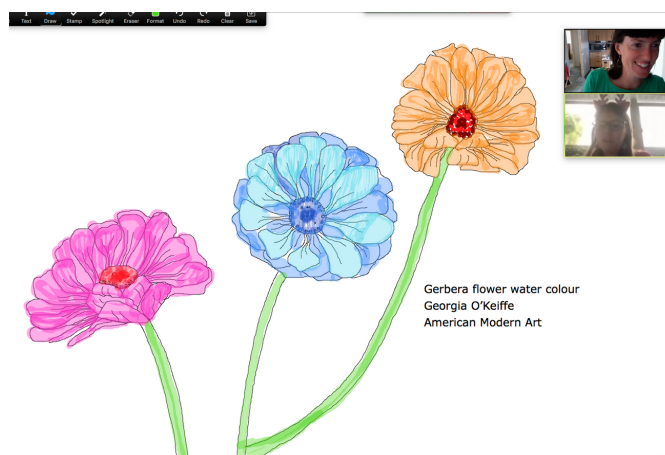
Card making galore using many different techniques. Left is Daley showing off his Fox Pop-Up design and right Ken proudly displaying his Jelli Printed cards.



ART WITH TAMARA

Tamara has continued with online art classes via Zoom.

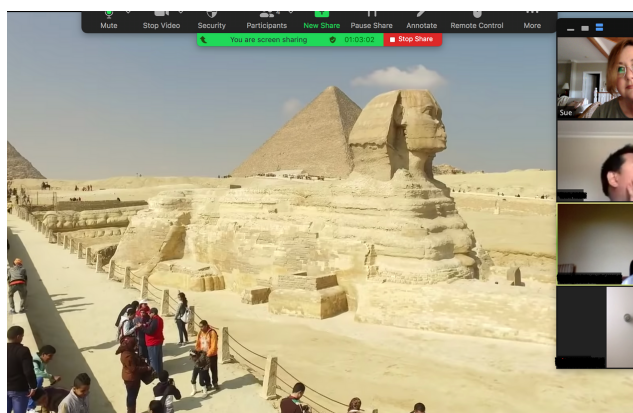
NOT SURE WHAT ELSE TO PUT HERE.....



VIRTUAL TRAVEL

This term we have visited Switzerland, South Africa and Disneyland (to name a few). Students are enjoying learning about many other countries and cultures.

Sue



FRIDAY HAPPY HOUR

Happy Hour is changing a little in Term 3. It will be moving back to the 3:30pm time slot and changing it's name in line with our other social groups to FRIDAY SOCIAL. It's a great chance to catch up at the end of the week, have a chat, a laugh, share stories and test your memory with some fun games, trivia and quizzes. Or share a joke and see if you can make us giggle!

Sue

Wavlink Course Schedule

Term 3 2021



Monday	Tuesday	Wednesday	Thursday	Friday	Saturday
Air Clay 9.30am – 12.30pm Wavlink Social 9.30am – 12.30pm *Performing Arts 10.30am – 12.00pm Mosaics @ *GWCC 1.30pm – 3.30pm Mosaics @ Wavlink 1.30pm – 3.30pm Technology Skills 1.30pm – 3.30pm	*Ceramics @ BPCC 9.30am – 12.30pm Wavlink Social 9.30am – 12.30pm *Virtual Travel 11.00am – 12.00pm Technology Skills 10am – 12.30pm *Music & Movement 1.30pm – 3.00pm Print and Paint 1.30pm – 3.30pm *Basic Spanish 2.00pm – 3.30pm Independent living skills 1.30pm – 3.30pm	Literacy & Numeracy 9.30am – 12.30pm iPad skills 10.00am – 12.30pm Wavfit @ MARC 1.30pm – 2.30pm Technology Skills 1.30pm – 3.30pm Card Making 1.30pm – 3.30pm Cooking for 1 5pm – 7pm	Ceramics @ Wavlink 9.30am – 12.30pm Bowling@Strike 10am – 12.30pm Technology Skills 10am – 12.30pm Technology Skills 1.30pm – 3.00pm Art T 1.30pm – 3.30pm Dinner Club 5.30pm – 8.00pm	Wellbeing 9.30am – 12pm Jewellery Making 10am – 12.30pm That's Life/ILS 1pm – 3pm *Friday Social 3.30pm – 4.30pm	Saturday Social 10.30am – 12.30pm Technology Skills 1.00pm – 3.00pm Crafty Creations 1.00pm–3.00pm

*Online class

*Brandon Park Community Centre
649 Ferntree Gully Rd, Glen Waverley* Glen Waverley Community Centre
700 Waverley Road, Glen WaverleyFor enrolment or enquires please contact us - 03) 99561 7104 / info@wavlink.org.au / 36 Myrtle St, Glen Waverley 3150

Air Clay Let your imagination guide you as you create colorful 3d objects and jewelry. Mosaics Create mosaic tile wall art and home décor, all materials provided. Print and Paint Explore printing using a variety of interesting and unique techniques. Ceramics Coil, slab, carving and glazing techniques, all materials and Kiln firing provided. Wavlink Social Seniors Social group incorporating a range of recreational activities such as games, gentle exercises, craft and conversation. Independent Living Skills/That's Life Practice and develop skills that will move you towards your individual goals and increase independence in everyday life. Literacy and Numeracy Improve your literacy and numeracy skills with activities tailored to participant goals and abilities. Jewellery Making Make your own accessories for yourself and friends using imaginative and sustainable methods.	Card Making Make your own hand made greeting cards for any special occasion, techniques include, embossing, stamping, painting, paper punching, origami and more. Art - Thursday 1.30pm – 3.30pm Explore different styles of art like cubism, animation, abstract, impressionism, pop art and different cultural arts. Be inspired to create your own masterpieces. Music and Movement Our bodies are designed to move. Enjoy the sensation of movement to music. Wellbeing Take time to look after yourself in a friendly and supportive group. Activities include, meditation, gentle exercise, horticultural therapy, nutrition education pampering and self-care. Saturday Social @ Wavlink Craft, cooking demo, social games and other fun recreational activities. Tech Skills – Learn basic iPad and computer skills, discover useful apps and uses for technology in everyday life. Cooking for 1 Learn about food safety and basic cooking techniques while preparing a simple nutritious dish for yourself.	Bowling Have fun bowling and go for a Strike. Dinner Club Join a group to have dinner together either in Glen Waverley or at the Wavlink Centre. Performing Arts Express yourself with different activities like improvising your own skit, music appreciation, drumming and percussion, dance routines and more. Basic Spanish Learn conversation basics in a friendly group with a flexible approach to suit range of abilities. Class packs with worksheets and other resources are sent at the start of Term. Virtual Travel Take a virtual tour to places you have always wanted to visit. Learn interesting facts about different countries and cultures and share your own travel experiences with others. Friday Social A fun relaxed social gathering at the end of the week. Enjoy trivia, games and conversation with a friendly group.
----------------------------------------------------------------------------------------------------------------------------------------------------------------------------------------------------------------------------------------------------------------------------------------------------------------------------------------------------------------------------------------------------------------------------------------------------------------------------------------------------------------------------------------------------------------------------------------------------------------------------------------------------------------------------------------------------------------------------------------------------------------------------------------------------------------------------------------------------------------------------------------------------------------------------------------------------------------------------------------------------------------------	---------------------------------------------------------------------------------------------------------------------------------------------------------------------------------------------------------------------------------------------------------------------------------------------------------------------------------------------------------------------------------------------------------------------------------------------------------------------------------------------------------------------------------------------------------------------------------------------------------------------------------------------------------------------------------------------------------------------------------------------------------------------------------------------------------------------------------------------------------------------------------------------------------------------------------------------------------------------------------------------------------------------------------------------------------------------------------------------------------------	-------------------------------------------------------------------------------------------------------------------------------------------------------------------------------------------------------------------------------------------------------------------------------------------------------------------------------------------------------------------------------------------------------------------------------------------------------------------------------------------------------------------------------------------------------------------------------------------------------------------------------------------------------------------------------------------------------------------------------------------------------------------------------------------------------------------------------------------------------------------------------------------------------------------------------

WALK TALK AND SHARE

The Pathways for Carers project offers carers of people with a disability or mental illness an opportunity to attend walking events in Victoria together and to learn more about news, services, and supports available to carers.

The Project has expanded over recent months with several new walks now established in great locations. Pathways for Carers is a Victorian Government funded program that involves monthly walks and morning tea with other carers, where walkers can learn more about news, services and support available to them.

WALKS IN OUR AREA

City of Melbourne

Boroondara

Mount Evelyn

Ringwood

Rowville

Wheelers Hill



The walks are free and open to all carers of an elderly person or someone with disability. More information, including walk details and how to be involved in the statewide expansion, visit the website: www.pathwaysforcarers.com.au

HAPPY 40TH BIRTHDAY WAVLINK

FROM A STUDENT

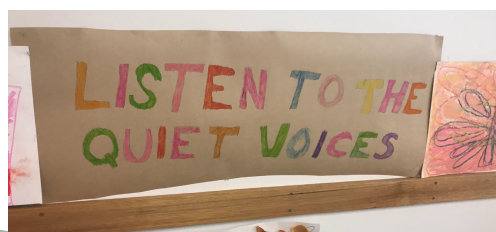
I started Wavlink in 2018. I did Sue's Moving Out Of Home course. We did cooking and learned things to get us started to move out home. We would go to the shop and get what we needed to cook lunch and after that we did work like helping with the washing. I made a lot of friends.

One of my good friends was Sandy. I would help him out and we would have a lot of fun. We did bowling on Friday afternoon last year with Sandy and Ash and more people from Wavlink.

I also did Computer with Annie on Fridays in 2019 and when we had lockdown I did Virtual Travel with Sue on Tuesday afternoon. It was very fun. On Monday I do Performing Arts and that is so much fun, and on Friday I join Happy Hour where I made lot of friends and have lot of fun with Sue and more staff from Wavlink. We do trivia. I would love it if you all come and join! You will have a lot of fun!

Happy birthday Wavlink!

Mel E



ART BY MEL